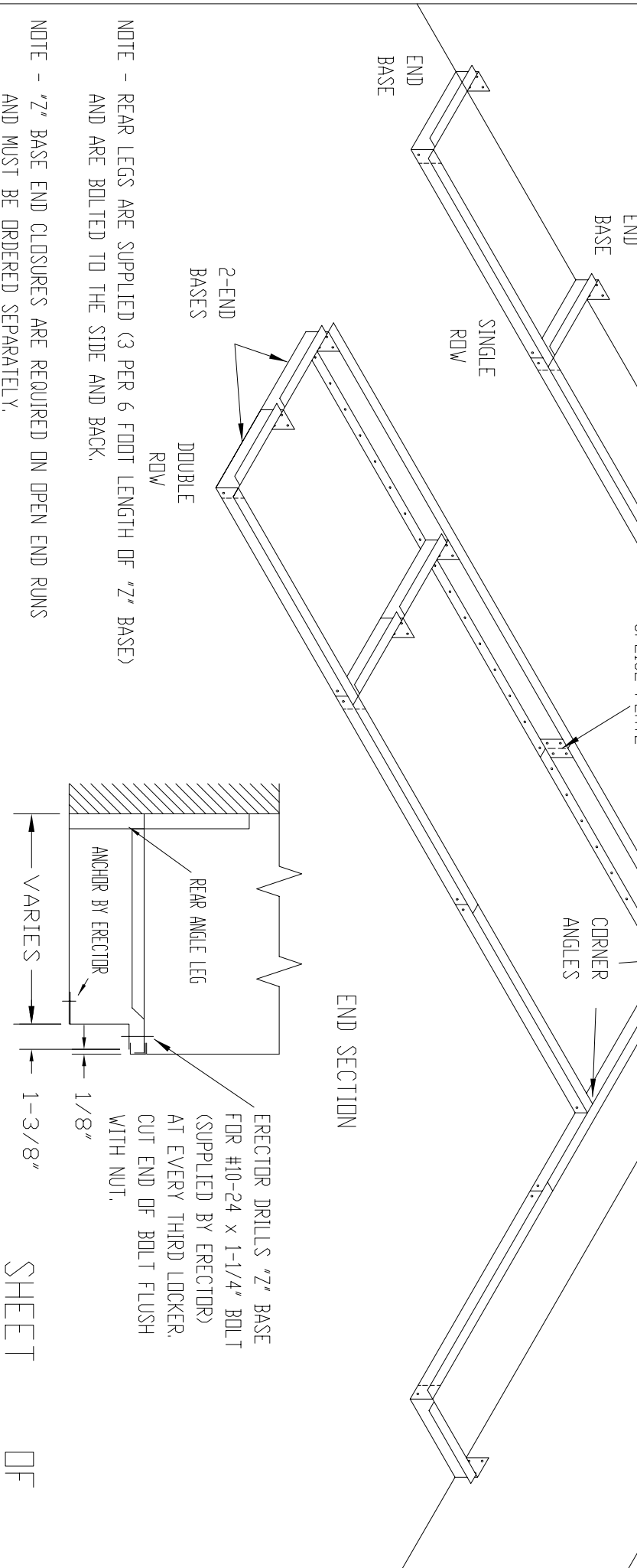


NOTE - USE AN END BASE AT EVERY OTHER JOINT BOTH SINGLE & DOUBLE ROW TO PROVIDE STABILIZATION FOR THE BASE SYSTEM.

NOTE - "Z" BASES ARE 72" LONG, ERECTOR TO CUT TO LENGTH IN FIELD.



NOTE - "Z" BASE END CLOSURES ARE REQUIRED ON OPEN END RUNS AND MUST BE ORDERED SEPARATELY.

NOTE - REAR LEGS ARE SUPPLIED (3 PER 6 FOOT LENGTH OF "Z" BASE) AND ARE BOLTED TO THE SIDE AND BACK.

SHEET OF

CONTINUOUS "Z" BASE

